

# Marshall (B1) Sub clover

## Pasture legumes



450mm+



4.8-8.0



Heavy-medium soils



PBR

**Marshall sub clover will be released in 2026 as the first commercial variety from the Barenbrug sub clover development program.**

Marshall was developed in partnership with SARDI to fulfil the role of Mintaro in mid-maturity sub clover applications. Marshall is an ideal choice as a stand-alone pasture legume for high yield forage, silage or hay production, or as a partner with other sub clovers in mixed perennial pastures.

### Where to use Marshall

- Perennial pasture systems requiring mid-mid/late maturity sub clover
- Beef cattle and sheep grazing
- Specialty hay production and cropping breaks
- Temperate climate zones, winter dominant rainfall
- Slightly acidic to mildly alkaline clay soils to medium loams
- Replaces all applications for Mintaro sub clover.

### Benefits of sowing Marshall

- Up to 24% total yield improvement over Clare and 19% over Mintaro
- Latest release in new family brachy sub clover developed for lower pH soils
- Improved early vigour, cool season yield and spring forage yield
- Seed hardness in ideal range for guarding against false breaks and reliable re-generation
- Improved seed burial to establish soil seed-bank
- Mid-maturity to suit a wide range of applications and partnering with other sub varieties.

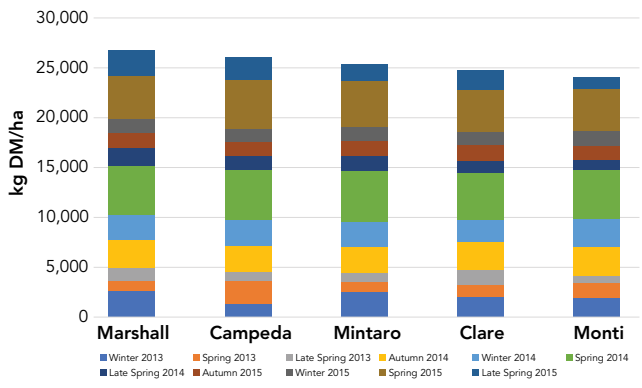
#### Brachy sub clover maturity and seed hardness:

Maturity	Cultivar	%Hard Seed	DTF	
early	Mawson	43%	90	1
mid	Mintaro	58%	110	1
mid	Marshall	53%	117	1
mid-late	Tarlee	5%	130	2
mid-late	Clare	38%	130	1
late	Antas	30%	134	1
late	Antillo	5%	138	2

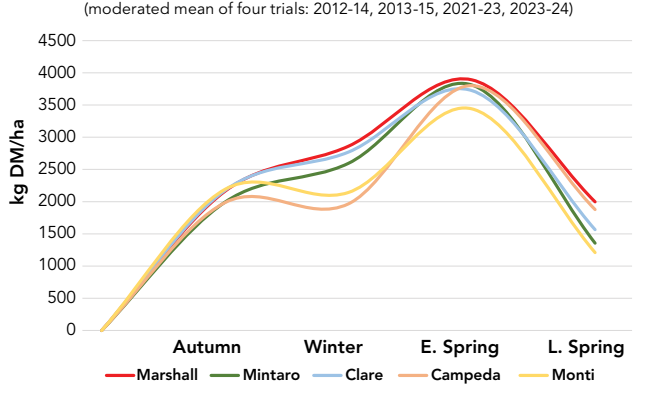
Sources: <sup>1</sup> SARDI <sup>2</sup> RAGT DTF = days to flowering

## Yield & Seasonal Performance

2013-2015 Mid-Maturity Sub clover Forage Yield Trial, Howlong



Mid-Maturity Sub clover, Growth Curves - Multi Year, Howlong

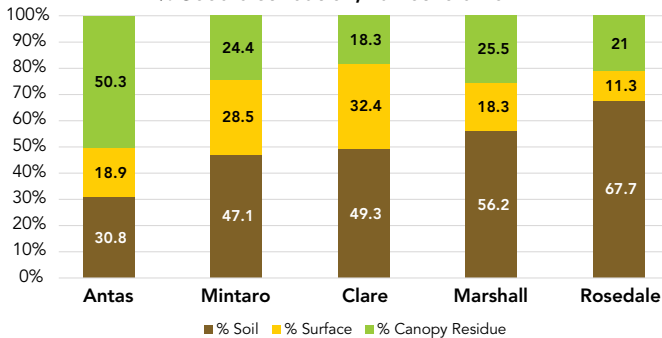


Marshall has consistently demonstrated improved total yield potential compared to other mid and mid-late maturity brachy sub clovers. Like most brachys, Marshall has improved forage yield compared to other sub and yanni clovers of similar maturity. Marshall has also demonstrated excellent autumn establishment, improved yield in cool seasons with some flexibility to continue to yield post-flowering, later into spring.

## Regenerative features

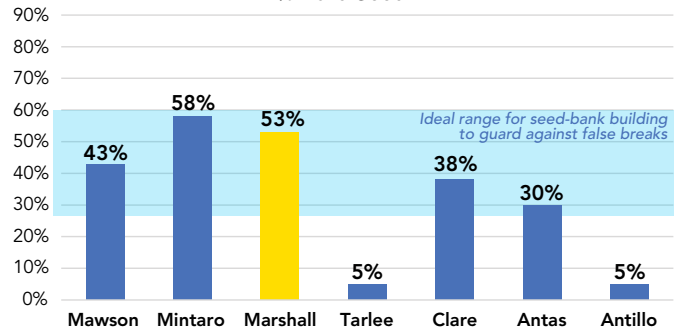
### Seed Distribution

% Seed distribution, Turretfield 2012



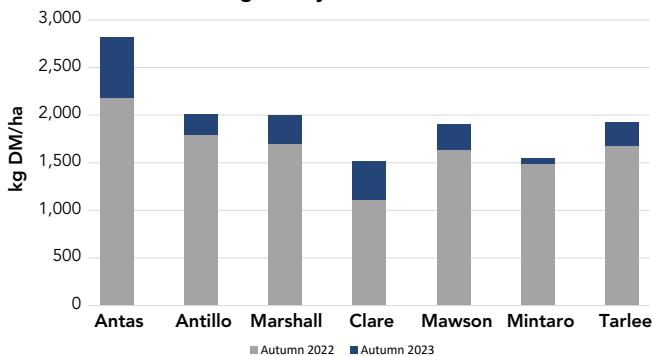
### Seed Hardness

% Hard Seed



### Autumn Regeneration

Autumn yield (seed regeneration yield), Howlong Brachy. Trial, 2021-2023



Marshall has been measured for improved seed burial characteristics compared to Mintaro and Antas, with a high proportion of seed either buried with in the soil or deposited on the soil surface. Under silage or hay production, Marshall will have the potential for a high proportion of seed to remain in the pasture for next-years' regeneration and, combined with ideal hard seed levels, help create resilience against false autumn breaks. Autumn regeneration is highly reliable, which creates the opportunity to build a feed-base sooner after the break.

## Sowing rates\*

Sole or main legume species: **10-15 kg/ha**  
Companion legume species: **6-8 kg/ha**

\* Marshall is a brachy sub, with a larger seed size, requiring increased sowing rates for reliable establishment and productivity.

**Sowing depth:**  
5-15mm

**Plant Breeders Rights (PBR):** This variety is registered under Plant Breeders Rights (PBR) in Australia. Unauthorised commercial propagation or any sale, conditioning, export, import or stocking of propagating material is an infringement under the Plant Breeders Rights Act (1994). Any breach of this legislation will leave the grower liable for prosecution.

**Disclaimer:** The information presented in this brochure is from official and other sources and is considered to be reliable. It is provided in good faith and every care has been taken to ensure its accuracy. Barenbrug does not accept any responsibility for the consequences that may arise from the acceptance of recommendations or the suggestions made.

orders@barenbrug.com.au

Freecall 1800 007 333 [barenbrug.com.au](http://barenbrug.com.au)

## Seed presentation

**Treatment:**

Available with AgriCOTE seed treatment

**Pack size:**

25kg net weight

Grow with Confidence



**BARENBRUG**