

SARDI 10 Series 2

Highly active winter lucerne

Lucerne



500mm-700mm+



4.5-8.5 (CaCl₂)



Most Soil Types



PBR



AL or AgriCator

SARDI 10 Series 2 benefits from excellent winter growth and is a leader in grazing tolerance for a highly winter active lucerne. During its development, the breeder was successful in focusing on improving the very popular SARDI 10. The greatest emphasis was on increasing forage production and quality, pest and disease resistance, persistence and grazing tolerance.

A key physical feature is the increased leaf retention down the length of each stem. These advancements allow for even greater adaptability to Australian farming systems.

Key features

- Winter activity 10
- Excellent seedling vigour
- Excellent pest and disease tolerance
- Improved persistence over SARDI 10 and other highly winter active cultivars
- Top-end forage production
- Improved leaf retention on stem, compared with other highly winter active cultivars, leading to forage quality improvements.

Segments

- Specialist year round hay production systems
- Short-term cropping rotations (3-5 years)
- High intensity systems such as dairy.

Product fit

Similar to its predecessor, SARDI 10 Series 2 is particularly suited to dryland mixed farming enterprises in Mediterranean climates with winter dominant rainfall patterns. As a highly winter active variety, SARDI 10 Series 2 will maximise production during winter months that typically receive the majority of rainfall. Its quick regrowth is also valuable in farming systems with intensive irrigated management including dairy farms and high yield hay and silage production.



Pest resistance

SARDI 10 Series 2 is highly resistant (HR) to spotted alfalfa aphid (*Therioaphis trifolii*) and blue-green aphid (*Acyrtosiphon kondoi*). As with other lucerne varieties, SARDI 10 Series 2 is susceptible to damage from red legged earth mite (*Halotydeus destructor*) and control measures need to take place prior to seeding or soon after germination. AgriCote seed coating will aid establishment in these circumstances.

Disease/Pest resistance

SARDI 10 Series 2 is resistant (R) to phytophthora root rot (*Phytophthora medicaginis*) and anthracnose.

Spotted Alfalfa Aphid	Blue Green Aphid	Phytophthora Root Rot	Anthracnose
HR	HR	HR	HR

Variety management/agronomy

During the establishment period lucerne seedlings are vulnerable and care must be taken not to overgraze as it can cause a severe reduction in plant density. Once established, rotational grazing is very important to help improve persistence of the crop. Ideally spell before cutting or grazing until 5–10% of stems commence flowering, or crown shoots are 1–2cm long on 50% of plants. Avoid cutting or grazing lower than 5cm. It is recommended to not graze the crop for more than a two-week period following which it is then spelled to allow restoration of plant reserves. Regular set stocking at moderate to high stocking rates reduces persistence.

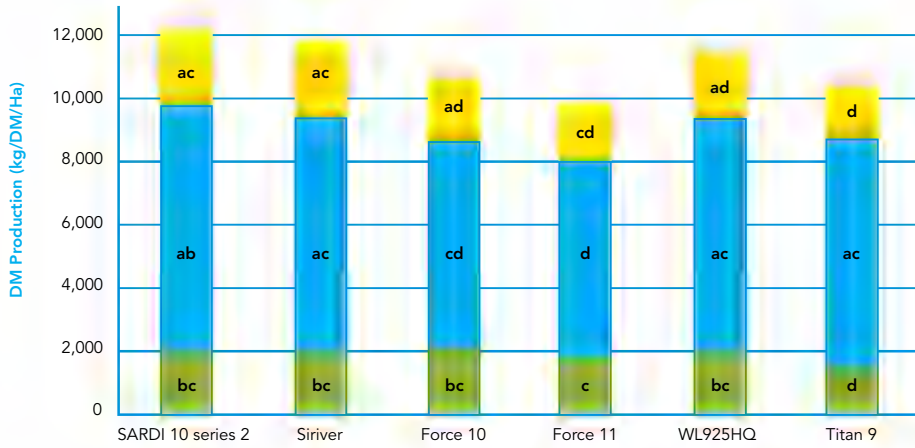
Performance

The excellent performance of SARDI 10 Series 2 has been demonstrated across a broad range of environments and farming systems in Australia. The significant breakthrough in lucerne breeding technology that combines seedling vigour with year-round growth, persistence and grazing tolerance means SARDI 10 Series 2 is well suited to challenging broadacre farming systems. SARDI 10 Series 2 has shown excellent forage yield against competitor varieties in the highly winter active category.



Alan Humphries SARDI Lucerne breeder (left) and Allen Newman (right) of Barenbrug in a trial plot of SARDI-Barenbrug Lucerne.

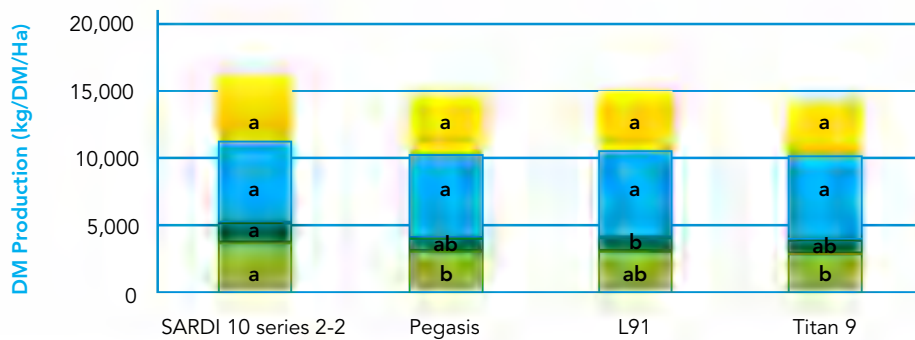
2017 Seasonal DM Production Dormancy 9–11 Lucerne Trial - Howlong NSW



■ Autumn 2017
■ Spring 2017
■ Summer 2017/18

Lucerne forage yield cutting trial located at Barenbrug research farm Howlong NSW. Trial sown spring 2016, full 2017 data set presented. Trial on going.

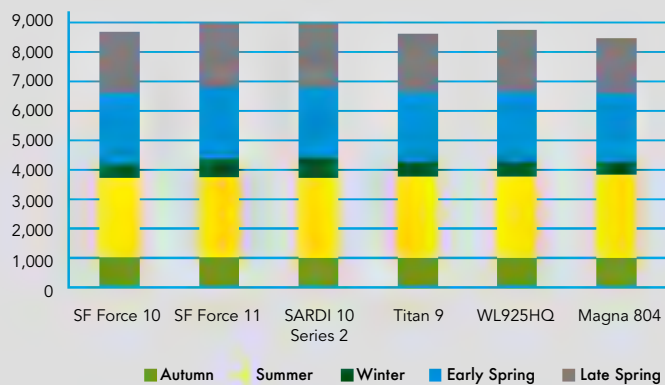
2011–16 Annual DM Production Dormancy 9–10 Lucerne Trial - Howlong NSW



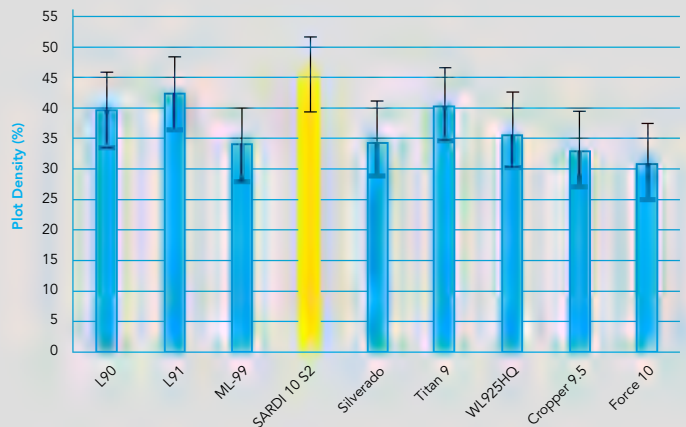
■ Autumn
■ Winter
■ Spring
■ Summer

Lucerne forage yield cutting trial located at Barenbrug research farm Howlong NSW. Trial sown 2011 and finished 2016.

2013-2016 PVTN Lucerne Trial - Stockinbingal NSW



2010–2012 SARDI 10 Series 2 persistence versus competitor cultivars over 5 sites



Plot density (%) of SARDI Ten Series 2 versus competitor cultivars over 5 sites (Hamilton 2012, Finley 2011, Lockhart 2010, Texas 2010, Denman 2011).

S.E.D: 6.699

SARDI Ten Series 2 demonstrated similar yield to the top performing cultivars, in an independent trial conducted at Stockinbingal, NSW as part of the MLA Pasture Variety Trial Network (PVTN)

Forage yield (kg DM/ha/yr.) of SARDI Ten Series 2 versus highly winter active cultivars in independent PVTN Stockinbingal, NSW lucerne trial (2013-2016) Explore PTN data at; tools.mla.com.au/ptn/#/home

SARDI 10 Series 2 under high disease pressure

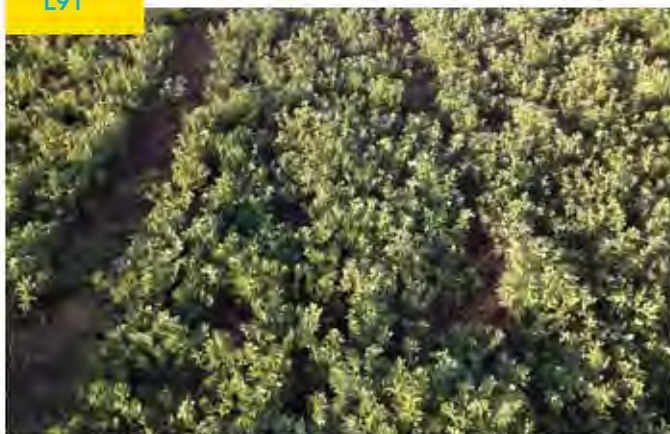
Three year old plots at time of photo. Denman NSW. Lucerne trial sown 2011.

Note improved plant numbers compared to L91 and Titan

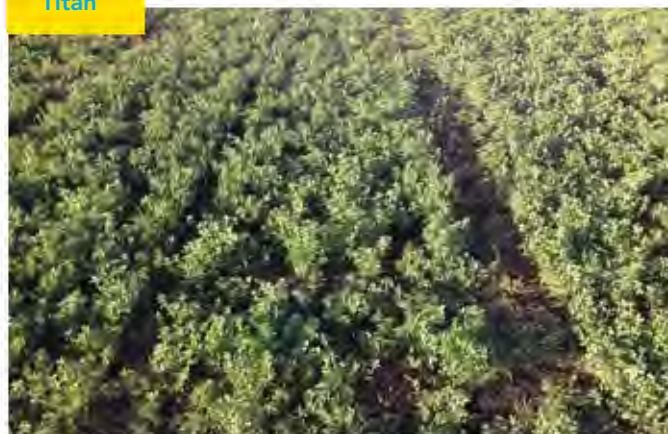
SARDI 10 Series 2



L91



Titan



**Grow with
Confidence**



Plant Breeders Rights (PBR): This variety is registered under Plant Breeders Rights (PBR) in Australia. Unauthorised commercial propagation or any sale, conditioning, export, import or stocking of propagating material is an infringement under the Plant Breeders Rights Act (1994). Any breach of this legislation will leave the grower liable for prosecution.

Disclaimer: The information presented in this brochure is from official and other sources and is considered to be reliable. It is provided in good faith and every care has been taken to ensure its accuracy. Barenbrug does not accept any responsibility for the consequences that may arise from the acceptance of recommendations or the suggestions made.

enquiries@barenbrug.com.au

barenbrug.com.au

BARENBRUG